

APPROX. WTS. (LBS)

ROTOR	16540
STATOR	27000
BRG. & BRKT. (2850 EA)	5700
ENCLOSURE	4500
SOLEPLATES (1375 EA)	2750
ARM. LEAD TERM. BOX	760
MISCELLANEOUS	400
<b>TOTAL</b>	<b>57650</b>

CERTIFIED PRINT FOR AMERICAN ELECTRIC POWER

P.O. NO. PX71-000000103 (SERIAL #1 THROUGH #10) EM SALE NO. 01-1103-11

P.O. NO. PX71-000000118 (SERIAL #9 AND #10)

KVA 50 HP 7000 VOLT 13200 AMP 283 PF 3 PH 3 SF 1.15

CYCLE 60 RPM 895 ROTATION (FACING END QPP. DRIVE) EITHER

TEMP RISE: STATOR 80 °C BY DEL. AT 1.0 SF ROTOR 100 °C BY RES AT 1.0 SF

ENCLOSURE WELL (NO FILTERS) MOTOR SP. HTR. WATTS 2030 VOLTS 208 PHASE 1

MOTOR AIR GAP .2 INCHES MAG PULL 3300 LBS AT .015 INCHES

AMBIENT TEMPERATURE 40 °C

RIGID BEARING CRITICAL SPEED 3500 RPM

DATE: 25 APRIL 2001

**Electric Machinery Company**  
800 CENTRAL AVENUE, MINNEAPOLIS, MN 55413

**TITLE OUTLINE - INDUCTION MOTOR**

BRACKET TYPE - SLEEVE BEARING - WP11 ENCLOSURE

DIMENSIONS IN INCHES - DO NOT SCALE REF B4-296

DFTM DAK 17 APR '01 APPD  
CHKD DAK 25 APR '01 APPD JMC 4-25-01  
APPD WLB 4/25/01 REV C SHEET 1 OF 2

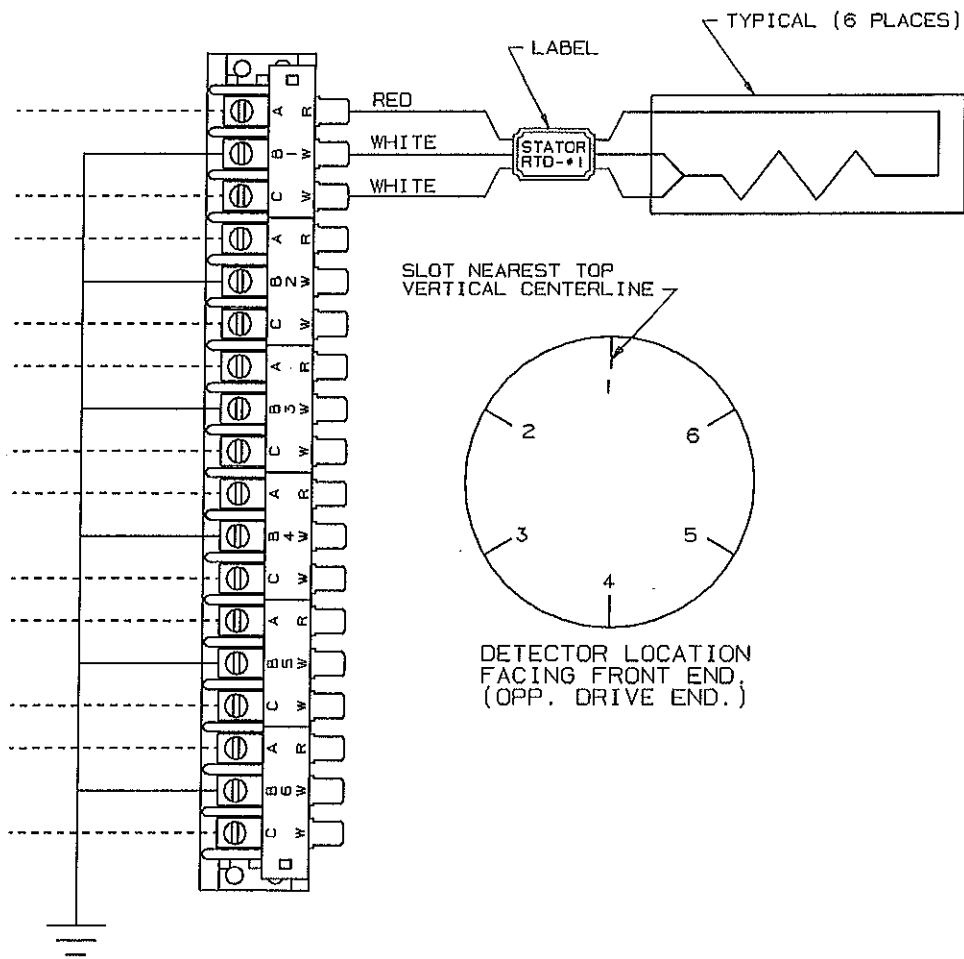
**134D079**





- NOTES -

1. DOTTED LINES INDICATE CONNECTIONS BY OTHERS.

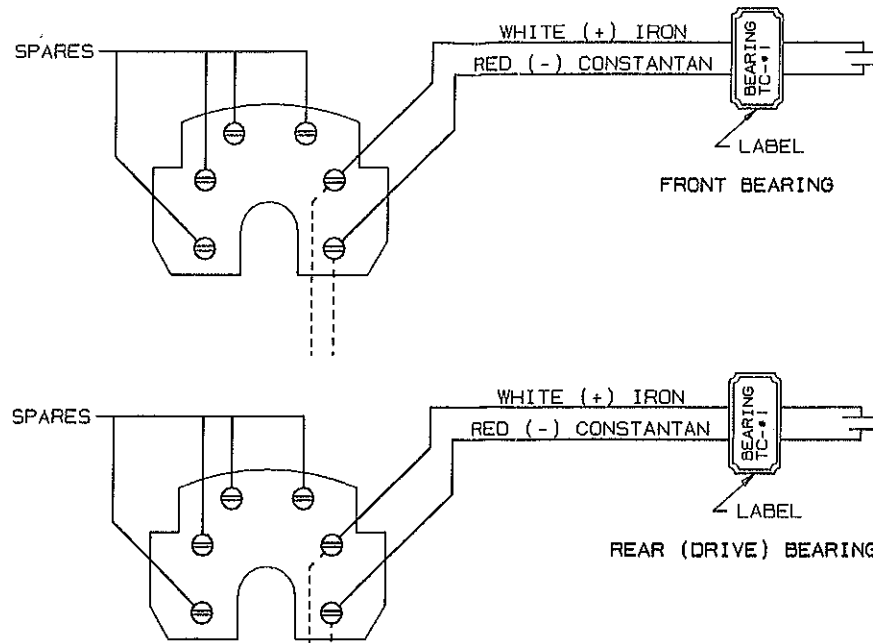


STATOR RESISTANCE TEMP. DETECTOR CONNECTION.

(6) DETECTORS RATED 10 OHMS AT 25° C. (COPPER).

MAX. STATOR RTD SETPOINTS: ALARM 145° C., SHUTDOWN 155° C. BASED ON CLASS F INSULATION MATERIALS.

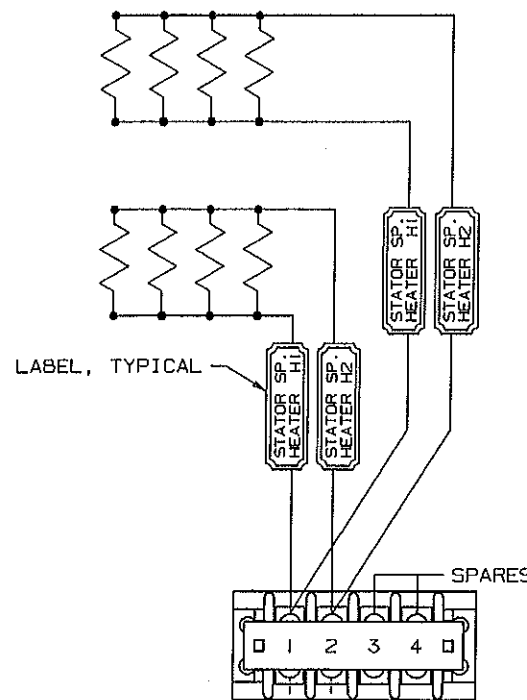
RESISTANCE TEMPERATURE DETECTOR CIRCUIT MUST BE GROUNDED TO PROTECT AGAINST POSSIBLE DANGEROUS INDUCED VOLTAGES.



BEARING THERMOCOUPLE CONNECTION

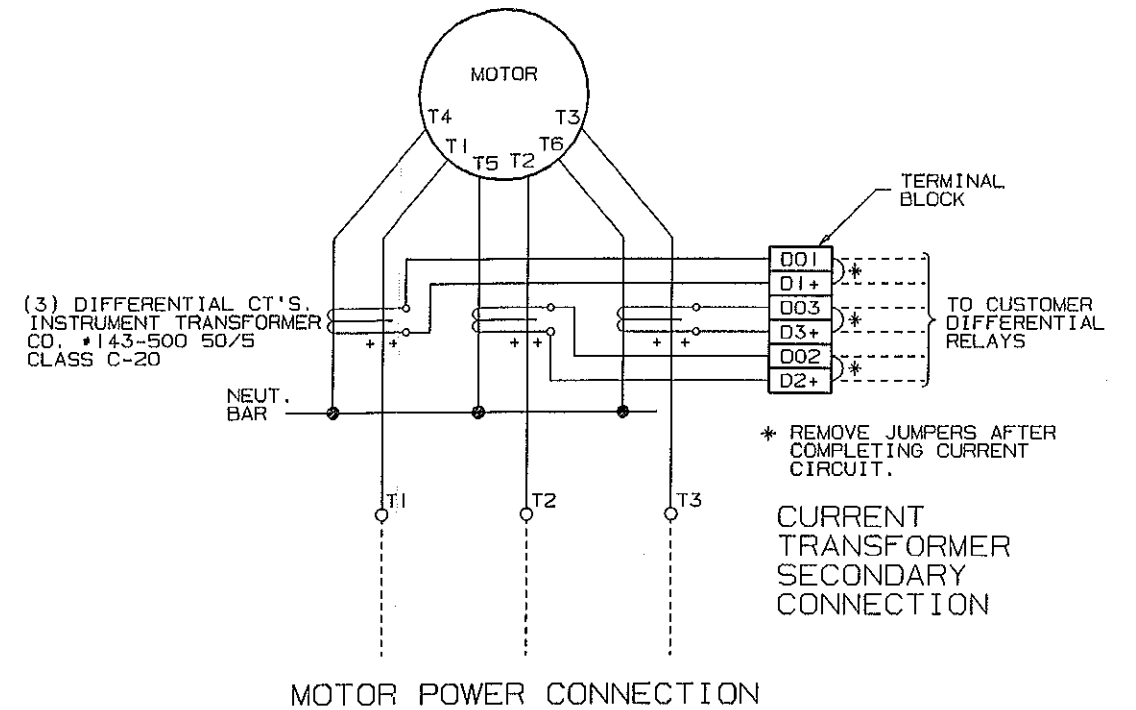
(1) TYPE J IRON-CONSTANTAN THERMOCOUPLE PER BEARING

MAXIMUM BEARING THERMOCOUPLE SETPOINTS:  
ALARM 95° C SHUTDOWN 105° C

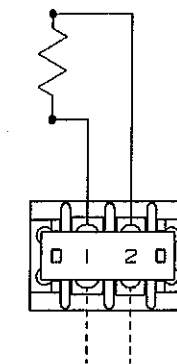


MOTOR SPACE HEATER CONNECTION

(8) SPACE HEATERS RATED 325 WATTS, 240 VOLTS  
TOTAL CONNECTED: 2000 WATTS, 208 VOLTS, 1 PHASE



MOTOR POWER CONNECTION



TERMINAL BOX SPACE HEATER CONNECTION

(1) SPACE HEATER RATED 200 WATTS, 240 VOLTS  
TOTAL CONNECTED: 150 WATTS, 208 VOLTS, 1 PHASE

ADDED MOTOR POWER CONNECTION, CURRENT TRANSFORMER SECONDARY CONNECTION, AND TERMINAL BOX SPACE HEATER CONNECTION DETAILS. REVISED MOTOR SPACE HEATER CONNECTION TO SHOW HEATER GROUPING AND LEAD ROUTING AS IT WILL BE IN MOTOR.  
- 01-1103-11 - DAK 8 JUNE 2001  
JJMC 6-11-01 WLB 6/11/01

LTR. ZONE	REVISION DESCRIPTION
FIRST USED	ENGINEERING REFERENCE
01-1103-11	

CERTIFIED PRINT FOR AMERICAN ELECTRIC POWER  
P.O. NO. PX71-000000103 (SERIAL #1 THROUGH #8) EM SALE NO. 01-1103-11  
P.O. NO. PX71-000000118 (SERIAL #9 AND #10)

<b>Electric Machinery Company</b> 800 CENTRAL AVENUE, MINNEAPOLIS, MN 55413	
TITLE <b>ELECTRICAL CONNECTIONS</b>	
DIMENSIONS IN INCHES - 00 NOT SCALE	REF
DFTM DAK 18 APR '01	APPD
CHKD DAK 25 APR '01	APPD JJMC 4-29-01
APPD	APPD WLB 4/25/01
DRAWING NUMBER <b>134D080</b>	
REV A SHEET 1 OF 1	

BY: DAK

DATE: 25 APRIL 2001